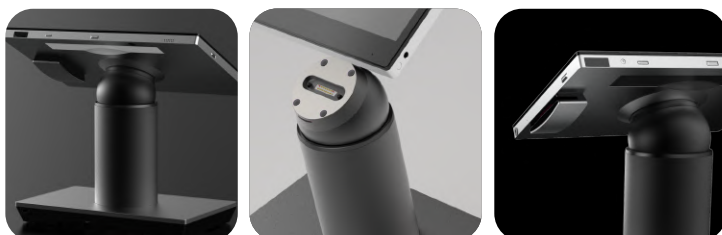


FLYTECH



M270 SERIES

The Power of 2-in-1 Hybrid POS



FEATURES

- 2-in-1 multifunctional POS
- Ultra-slim & ergonomic design
- Aesthetic metallic design
- Magnetic lock design
- Rotatable screen for multiple angles
- USB-over-IP wireless control

A. SCREEN SIZES

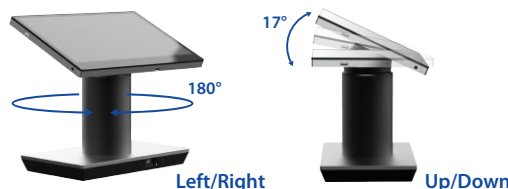


11.6" (M276)



13.3" (M278)

B. ERGONOMIC DESIGN



Left/Right

Up/Down

SPECIFICATIONS (SYSTEM)

	F12	F63U	
System	Motherboard	F12	F63U
	Processor	M276/M278: Qualcomm® 660	M276: Intel® Celeron 4305UE M278: Intel® Celeron 4305UE, Intel® i3-8145U
	Memory	4GB LPDDR4	4GB DDR4 (with Intel® Celeron 4305UE) 8GB DDR4 (with Intel® i3-8145U)
	Storage	64GB eMMC	128GB eMMC
	Supported OS	Android 10	Windows 10 IoT Enterprise, Linux
Display	Size and Resolution	M276: 11.6" 1920 x 1080 (Full HD) M278: 13.3" 1920 x 1080 (Full HD)	M276: 11.6" 1920 x 1080 (Full HD) M278: 13.3" 1920 x 1080 (Full HD)
	Touch Screen	True-Flat PCAP multi-Touch	True-Flat PCAP multi-Touch
I/O Ports (Tablet)	USB	1x USB3.0 (Type C) (data transfer only)	1x USB3.0 (Type C) (data transfer only)
	DC Jack	1x 2PIN	1x 2PIN
I/O Ports (Premium Docking Station)	USB	1x USB2.0 Type C 3x USB2.0	1x USB2.0 Type C 3x USB2.0
	Powered USB	1x 12V 1x 24V	1x 12V 1x 24V
	Serial Port	2x DB9 (COM1: 0V*/5V/12V, COM2: 0V*/5V/12V)	2x DB9 (COM1: 0V*/5V/12V, COM2: 0V*/5V/12V)
	LAN	1x RJ45 (10/100 Mbps)	1x RJ45 (10/100 Mbps)
	Cash Drawer	1x RJ11	1x RJ11
	DC Jack	1x 4PIN	1x 4PIN
	Sensor	G-sensor	G-sensor
Control	Microphone	1	1
	Speaker	1x 1W	1x 1W
Battery & Power	Battery	3.85V 7000mAh	3.85V 7000mAh
	Power Adapter	120W / 19V (tablet charging through stand only)	120W / 19V (tablet charging through stand only)
Communication	Wireless LAN + BT	802.11 series, BT4.0+LE	802.11 series, BT4.0+LE
Certificate	EMC & Safety	FCC Class B, CE Mark Class B, LVD, RF	FCC Class B, CE Mark Class B, LVD, RF
Environment	Operating Temperature	0°C ~ 40°C (32°F ~ 104°F) (without charging) 0°C ~ 35°C (32°F ~ 95°F) (charging)	0°C ~ 40°C (32°F ~ 104°F) (without charging) 0°C ~ 35°C (32°F ~ 95°F) (charging)
	Humidity	20% ~ 80% RH non-condensing	20% ~ 80% RH non-condensing
Dimensions	W x D x H	M276: 276 x 179 x 15.4 mm (10.9" x 7" x 0.6") M278: 312.5 x 200 x 15.4 mm (12.3" x 7.9" x 0.6")	M276: 276 x 179 x 15.4 mm (10.9" x 7" x 0.6") M278: 312.5 x 200 x 15.4 mm (12.3" x 7.9" x 0.6")
Weight	Weight	M276: 800g (1.76 lbs) M278: 980g (2.16 lbs)	M276: 800g (1.76 lbs) M278: 980g (2.16 lbs)
Peripheral (Option)	Scanner	2D Scanner	2D Scanner
	MSR	3-Track MSR	3-Track MSR
	iButton	iButton	iButton
	Fingerprint	Fingerprint Reader	Fingerprint Reader
	RFID	RFID Reader	RFID Reader
	Rear Camera (*only for project)	1x SMP	1x SMP

SPECIFICATIONS (STAND)

Stand	Premium Docking Station (P2-DK11)	Premium Docking Station with USB-over-IP (P2-DK10) (*only for project)	
External I/O Ports	USB	1x USB2.0 Type C 3x USB2.0	1x USB3.0 Type C 2x USB3.0 1x USB2.0
	Powered USB	1x 12V 1x 24V	1x 12V 1x 24V
	Serial Port	2x DB9 (COM1: 0V*/5V/12V, COM2: 0V*/5V/12V)	2x DB9 (COM1: 0V*/5V/12V, COM2: 0V*/5V/12V)
	LAN	1x RJ45 (10/100 Mbps)	1x RJ45 (1 Giga LAN)
	Cash Drawer	1x RJ11	1x RJ11
	DC Jack	1x 4PIN	1x 4PIN
Power	Power Adapter	120W / 19V	120W / 19V
Communication	USB-over-IP	-	Yes

* PRODUCT SPECIFICATIONS AND DATA ARE SUBJECT TO CHANGE WITHOUT NOTICE *

Taiwan - Headquarters

No.168, Sing-ai Rd., Neihu District,
Taipei City 11494, Taiwan, R.O.C.
Tel: 886-2-8791-4988
Fax: 886-2-8791-4966
E-mail: sales@flytech.com.tw
www.flytech.com

U.S.A. - California

271 East Brokaw Road, San Jose,
CA 95112, U.S.A.
Tel: 1-510-257-5180
Fax: 1-510-257-5181
E-mail: sales@flytech.com

China - Shanghai

3F Building 39, No. 333 Qin Jiang Rd.,
Shanghai 200233, P.R.China
Tel: 86-21-5426-1555
Fax: 86-21-5426-1001
E-mail: sales@flytech.com.cn
www.flytech.com.cn

China - Hong Kong SAR

Rm01, 6/F, Blk A, Tonic Industrial Centre,
26 Kai Cheung Road, Kowloon Bay,
Kowloon, Hong Kong.
Tel: 852-3525-5800
Fax: 852-2751-7447
E-mail: sales@flytech.com.hk

